

Earth Resource Mapping

ERDAS Imagine® 8.5 ECW Plug-in Overview

June 2002



Earth Resource Mapping

Level 2, 87 Colin Street
West Perth
Western Australia 6005
Phone: +61 8 9388 2900
Fax: +61 8 9388 2901

4370 La Jolla Village Drive
Suite 900, San Diego
CA 92122-1253 USA
Phone: +1 858 558 4709
Fax: +1 858 558 2657

Blenheim House, Crabtree Office
Eversley Way, Egham
Surrey, TW20 8RY, UK
Phone: +44 1784 430 691
Fax: +44 1784 430 692

All product and company names are trademarks or registered trademarks of their respective owners. ERDAS and ERDAS Imagine 8.5 are trademarks or registered trademarks of Leica Geosystems. The ECW plug-in for ERDAS Imagine is provided by Earth Resource Mapping, and does not imply endorsement of the plug-in by Leica Geosystems.

Table of Contents

PRODUCT/SOLUTION CLIENT EXAMPLES	3
PRODUCT DESCRIPTION	4
New Features Overview	4
Installation and Set-Up	4
DISPLAYING LOCAL IMAGES (.ers, .ecw and .alg)	5
DISPLAYING REMOTE ECW IMAGES USING ECWP	7
CREATING ECWP SUPPORT FILES	9
Using the utility	9
Using a text editor	10
PRODUCT INFORMATION	11
Hardware/Software Requirements	11
Product Literature and Notes	12
FREQUENTLY ASKED QUESTIONS	13

Problem / Solution Client Examples

The ERDAS Imagine®8.5 ECW plug-in solves many user problems. Two examples are:

Customer Problem 1:

Customer cannot access ER Mapper formats including ECW.

Feature Solution 1:

The ERDAS Imagine®8.5 plug-in supports .ers, .alg and .ecw giving users the ability to work with all supported ER Mapper formats within the ERDAS® environment.

Customer Problem 2:

User cannot access remote ECW imagery.

Feature Solution 2:

Users can now access remote ECW imagery by utilizing the ERDAS Imagine®8.5 plug-in's ability to display images via URL access to Earth Resource Mapping's Image Web Server technology.

Product Description

This FREE plug-in adds support for .ecw, ECWP, .alg and .ers image formats.

Features include;

- Ability to view .ecw format
- Ability to view remote ECW imagery via ECWP Support from an Image Web Server
- Ability to view .alg and .ers format

New Feature Overview

The ERDAS Imagine®8.5 plug-in offers greater functionality in the ERDAS® environment by adding support for .ecw, ECWP, .ers and .alg image formats.

Installation and set-up

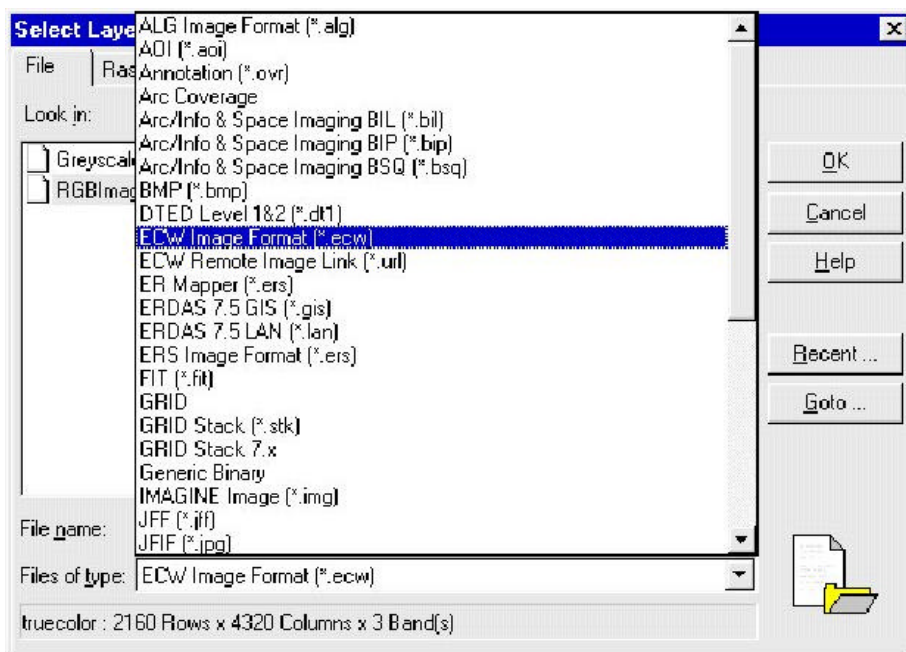
1. Ensure ERDAS Imagine®8.5 is not open
2. Run the self extracting install file, answer install prompts
3. Open ERDAS Imagine®8.5
4. If needed, regenerate the raster settings by going to menu "Utilities ? Reconfigure Raster Formats" (See FAQ).

Displaying Local Images (.ers, .ecw, .alg)

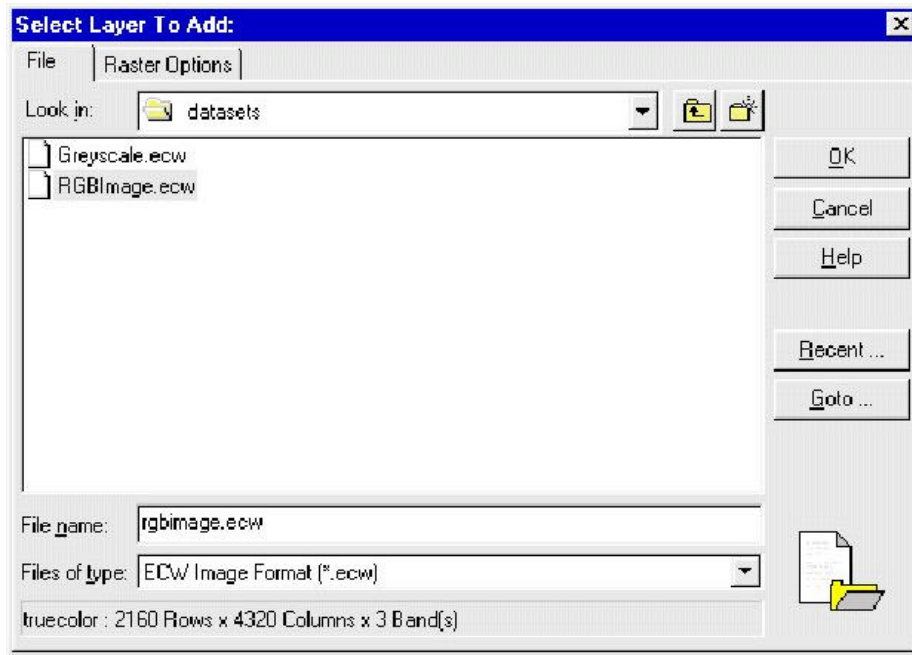
1. Open ERDAS Imagine®8.5.



2. In the Viewer menu bar, select **File | Open | Raster Layer**.
3. From the **Files of type:** dropdown menu select the file type you wish to view. Note; this gives you the following options:
 - .ers
 - .alg
 - .ecw
 - ECW Remote Image Link (ECWP Support)

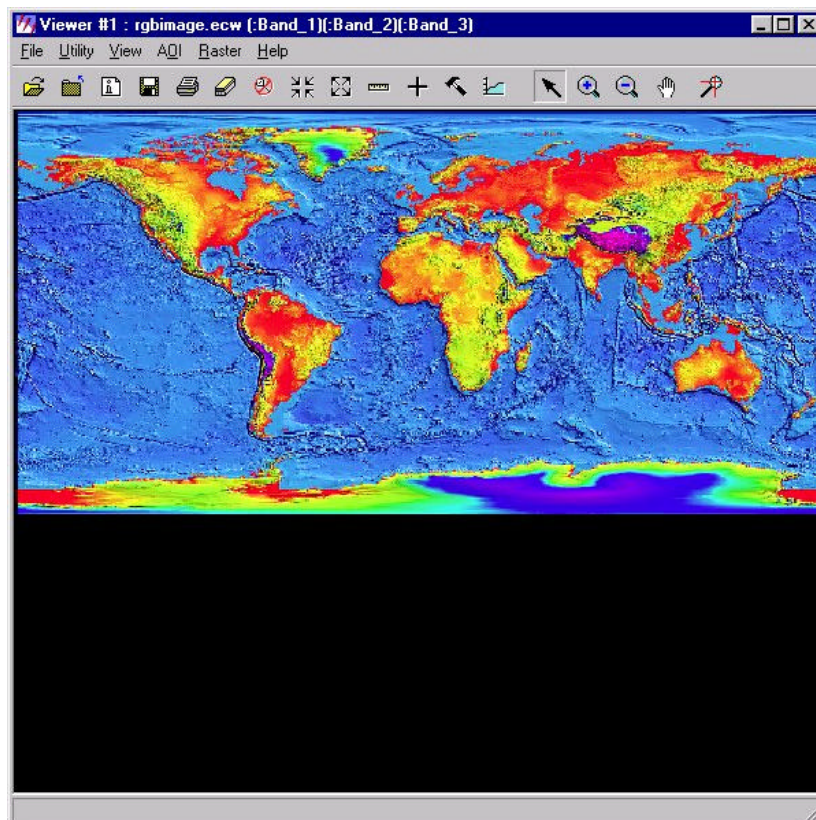


4. To view in the **File Name:** part of the **Select Layer to Add** dialog, navigate to the directory containing your ECW or ER Mapper imagery and click on the DESIRED file.



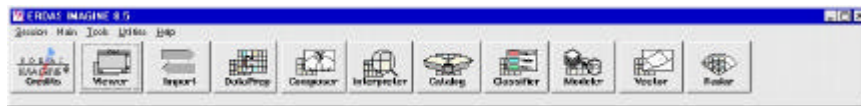
5. Click on the **Raster Options** tab at the top of the **Select Layer To Add** dialog.

Note: If the image appears reversed in colour, then the Red, Green and Blue setting as standard in ERDAS Imagine®8.5 may be reversed. See FAQ.

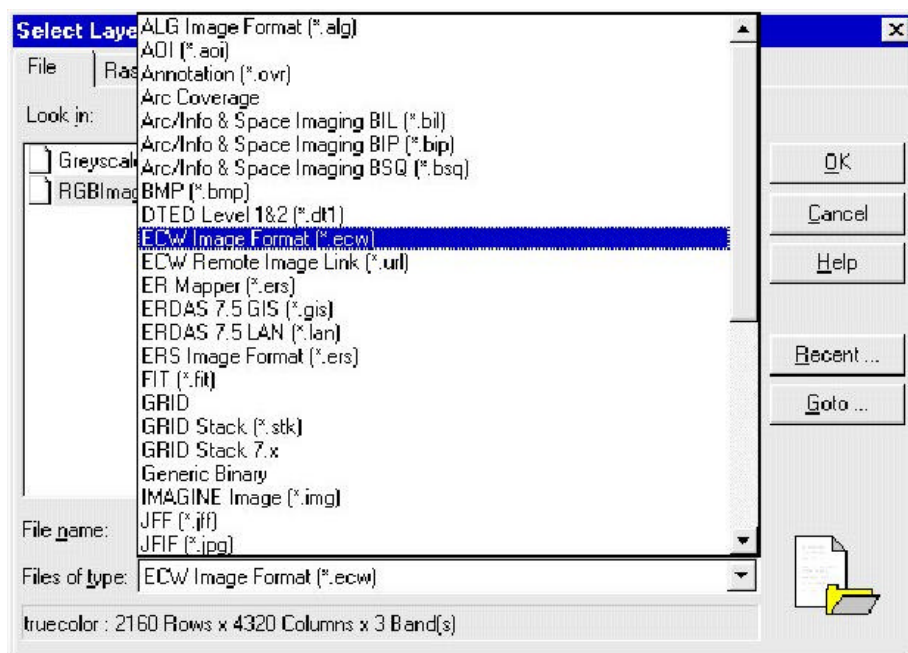


Displaying Remote ECW Images using ECWP

1. Open ERDAS Imagine® 8.5



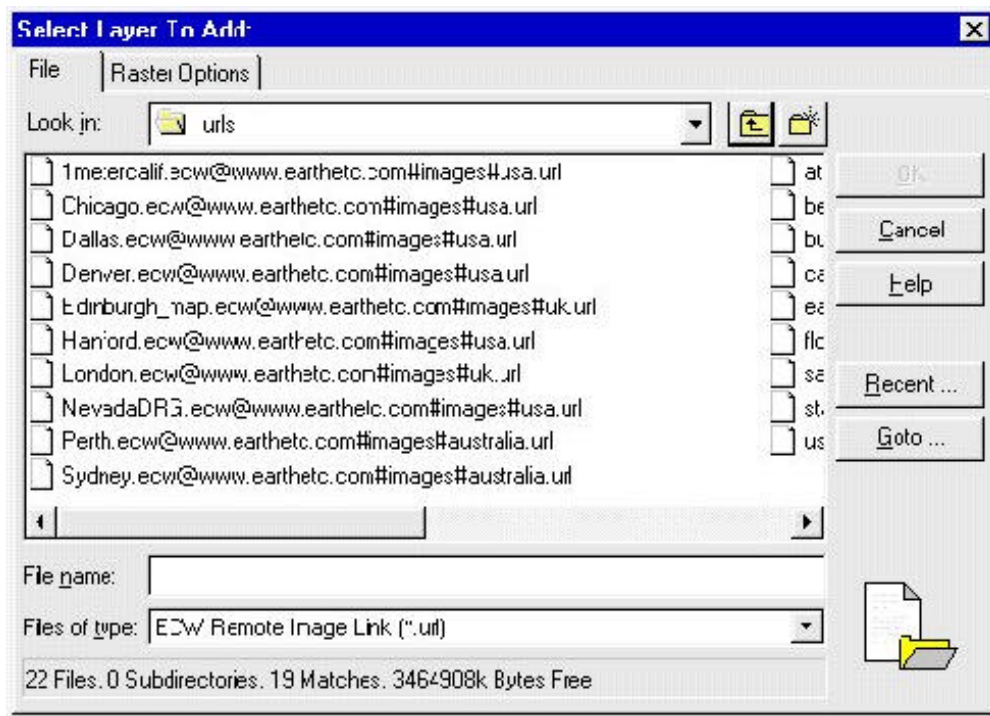
2. In the viewer menu bar, select **File | Open | Raster Layer**.
3. From the **Files of type** dropdown menu select the ECW Remote Image Link (*.url) file type.



4. Navigate to the directory containing “.url” files. Example “.url” files are installed with the and can be found in the directory:

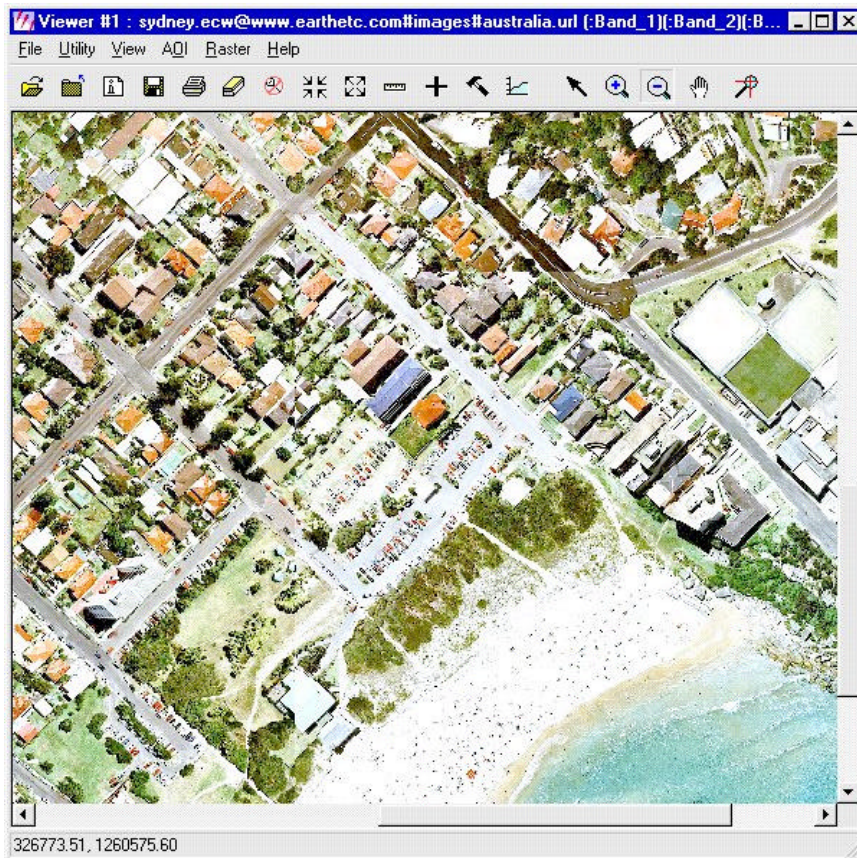
“C:\Program Files\Earth Resource Mapping\ECW and ER Mapper\Erda URLs”

5. Select the “.url” file.



6. Click **OK** in the **Select Layer To Add** dialog to display the file.

Note: When opening a remote ECW image the speed of display is dependent upon your bandwidth connection and whether you are accessing the source image via the Internet or through your internal network.



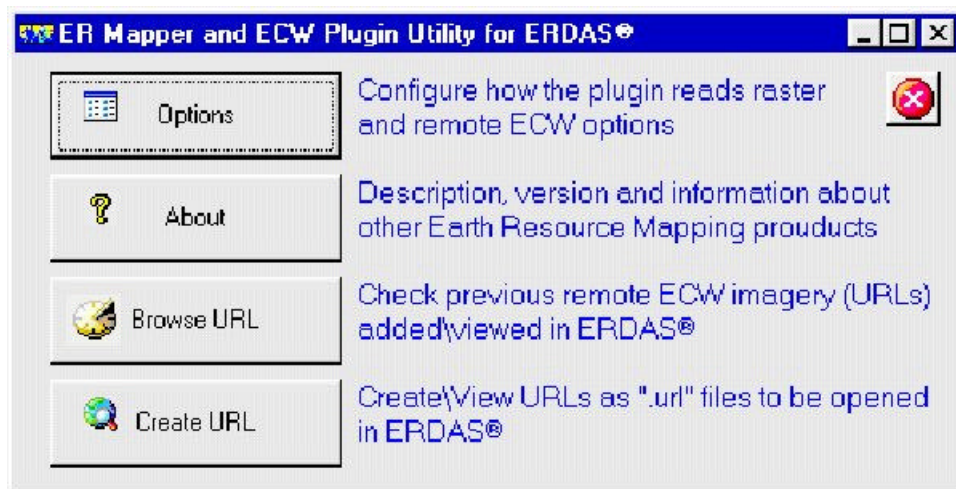
Creating ECWP Support files

ERDAS Imagine® 8.5 plug-in accesses remote ECW imagery via a URL that is stored in a “url file” on your hard disk (or floppy disk).

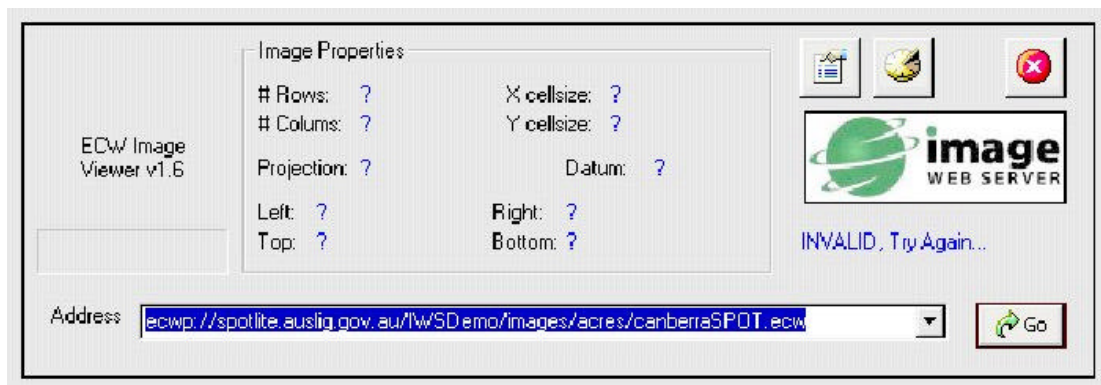
This file is simply a text file with an “.url” extension and that you can edit inside any text editor. There are currently two techniques for creating URL files a) using the utility or b) using a text editor.

a) Using the utility

1. Open the application “ErdasErmSettings.exe” located in the bin directory, eg, C:\Program Files\IMAGINE 8.5\bin\NTx86



2. Click the “Create URL” button to bring up the URL dialog.



3. Enter the URL into the “address” field and click “Go”. If the URL is correct, the dialog will close and the “.url” file will be created in the default directory.
4. Given the default options, if you typed the URL

ecwp://www.earthetc.com/images/uk/Edinburgh_map.ecw

then the resultant “.url” file:

Edinburgh_map.ecw@www.earthetc.com#images#uk.url

will be created in the directory

C:\Program Files\Earth Resource Mapping\ECW and ER Mapper Erdas \URLs

b) Using a text editor

1. Launch your text editor application, (eg Windows Notepad.exe)
2. Use File → New to create a new text file

3. Type the address of the URL at the start of the file, (eg
ecwp://www.earthetc.com/images/uk/Edinburgh_map.ecw)
4. Use File→ Save As... and then name the file with .url
extension. This name can be any valid filename, but as long as
it has .url extension,
(eg. Edinburgh_map.ecw@www.earthetc.com#images#uk.url)

Note: For more examples look in the install directory:

*“C:\Program Files\Earth Resource Mapping\ECW and ER Mapper
Erdas \URLs”*

and open these “.url” files in a text editor.

Product Information

Hardware/Software Requirements

The basic requirements are similar to ERDAS Imagine®8.5 software (Windows Platform). ERDAS Imagine®8.5 or above is required to use the plug-in. Minimal software/hardware requirements for ERDAS® can be found at:

<http://www2.erdas.com/supportsite/specs/specs.html>

Software		
	Supported	Recommended
Operating System	<ul style="list-style-type: none">○ Windows NT 4.0 SP6○ Windows 2000 SP2○ Windows XP	<ul style="list-style-type: none">○ Windows XP
Hardware		
Processor	<ul style="list-style-type: none">○ Intel® Pentium® II or higher	<ul style="list-style-type: none">○ Pentium® III
Memory	<ul style="list-style-type: none">○ 128MB or higher	<ul style="list-style-type: none">○ 256MB or higher
Display	<ul style="list-style-type: none">○ SVGA 800x600 with 256 colours or higher resolution	<ul style="list-style-type: none">○ 1024x768 with 64K colours or higher resolution
Free Disk Space	<ul style="list-style-type: none">○ 1GB	-

To install the ERDAS Imagine®8.5 plug-in the following free disk space and access privileges are required:

Software		
	Supported	Recommended
Access Privileges	<ul style="list-style-type: none"> ○ To install, requires either administrator or power user access privileges 	
Hardware		
Free Disk Space	<ul style="list-style-type: none"> ○ 3.5MB in the ERDAS® install directory ○ 3MB in the User Install directory 	

Product Literature and notes

ER Mapper Website:

The ER Mapper website contains all up-to-date information regarding products, applications, support, updates, downloads, press releases, company information and on-line shopping.

You can download the ERDAS Imagine®8.5 plug-in from:

www.ermapper.com/downloads

Press Releases:

Press Release: Free ECW released for ERDAS Imagine®8.5

All press releases can be viewed at the following URL:

<http://www.ermapper.com/cgi-bin/press/presslist.cfm?view=>

Pricing:

The ERDAS Imagine®8.5 is FREE and provided by Earth Resource Mapping as a service to users. It is not associated in any way with Leica Geosystems.

Notes:

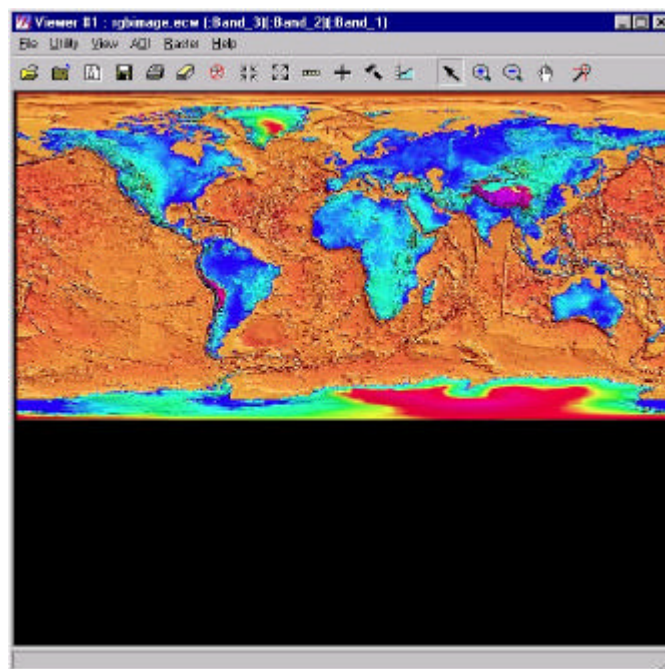
Please read the “Read Me” file after installing the product.

Frequently Asked Questions

Q. Images in a Red Green and Blue display appear inverted?

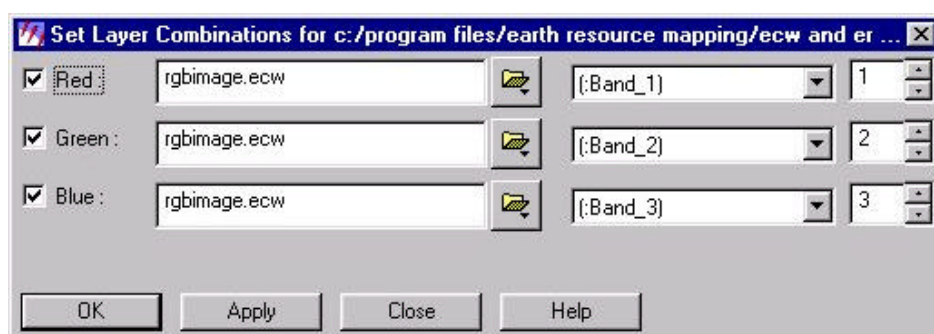
A. When loading RGB images with the plug-in, they may display incorrectly due to ERDAS Imagine®8.5 default band assignment.

ERDAS Imagine®8.5 assigns the RGB bands as R=Band_3, G=Band_2, B=Band_1 or 321 whereas the ECW and ER Mapper images assign the R and B bands in the opposite structure, eg R=Band_1, G=Band_2, B=Band_3 or 123.

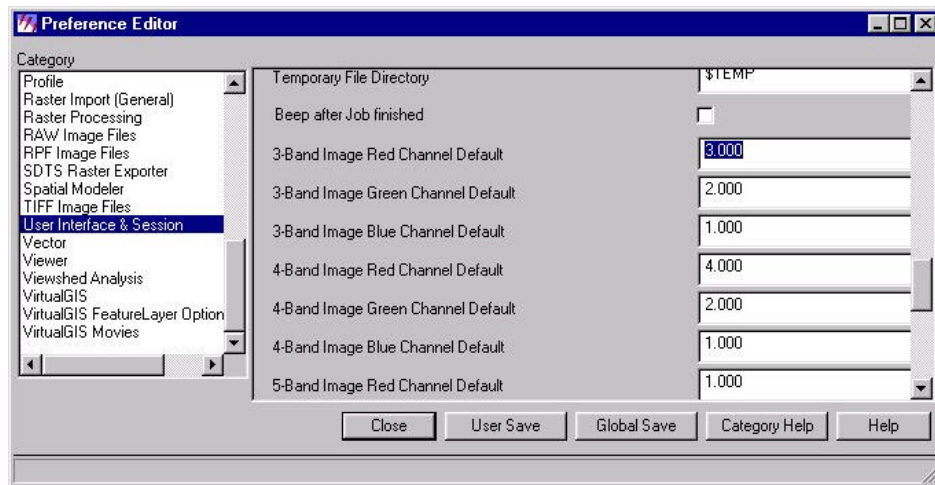


You can correct the display by changing ERDAS Imagine®8.5 RGB default band assignment to match that for ECW and ER Mapper images:

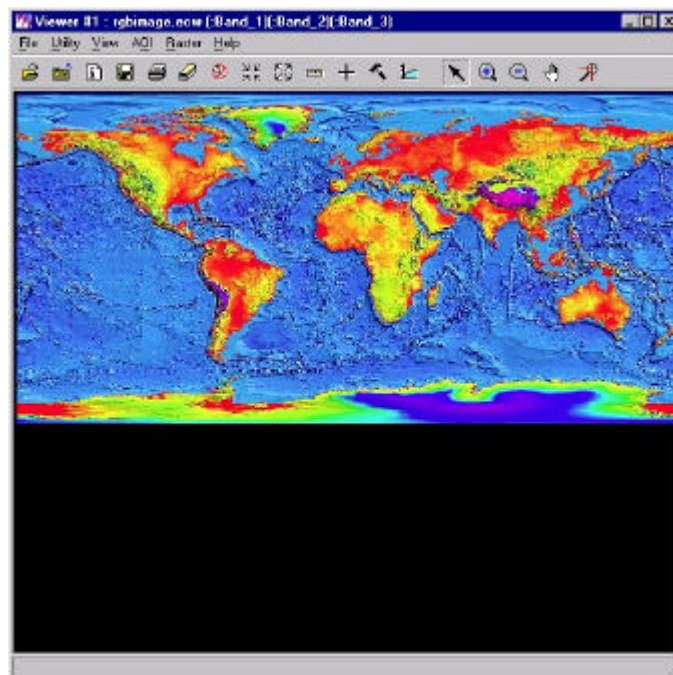
1. From the Viewer menu select Raster/band Combinations. In the resulting prompt colours can be assigned.



- Alternatively the Preferences/User Interface and Session option may be used to change the default assignment of RGB



The RGB image should now be visually correct



Q. Does the ERDAS Imagine®8.5 plug-in contain any sample data?

A. The ERDAS Imagine®8.5 plug-in includes a few small datasets and example URL's to test the image formats supported by the ERDAS Imagine®8.5 plug-in. The datasets are located in the directory chosen during the installation, typical location of example datasets:

C:\Program Files\Earth Resource Mapping\ECW and ER Mapper Erdas Datasets

This directory contains example datasets to test the ECW (.ecw, .url) and ER Mapper (.alg, .ers) image support provided by the plug-in in ERDAS Imagine®8.5.

ECW Datasets

Dataset	Description
RGBImage.ecw	ECW, 3 bands
Greyscale.ecw	ECW, 1 bands
Perth.ecw@www.earthetc.com#images#australia.url	Remote ECW, served by Image Web Server

ER Mapper Datasets

Dataset	Description
3D_Julia_Fractals.alg	ER Mapper Algorithm
Australia_DTM.ers	ER Mapper Raster Dataset
Demo_wheel_virtua_dataset.ers	ER Mapper Virtual Dataset

Information can be found in the file "Readme_Datasets.txt" in the dataset directory.

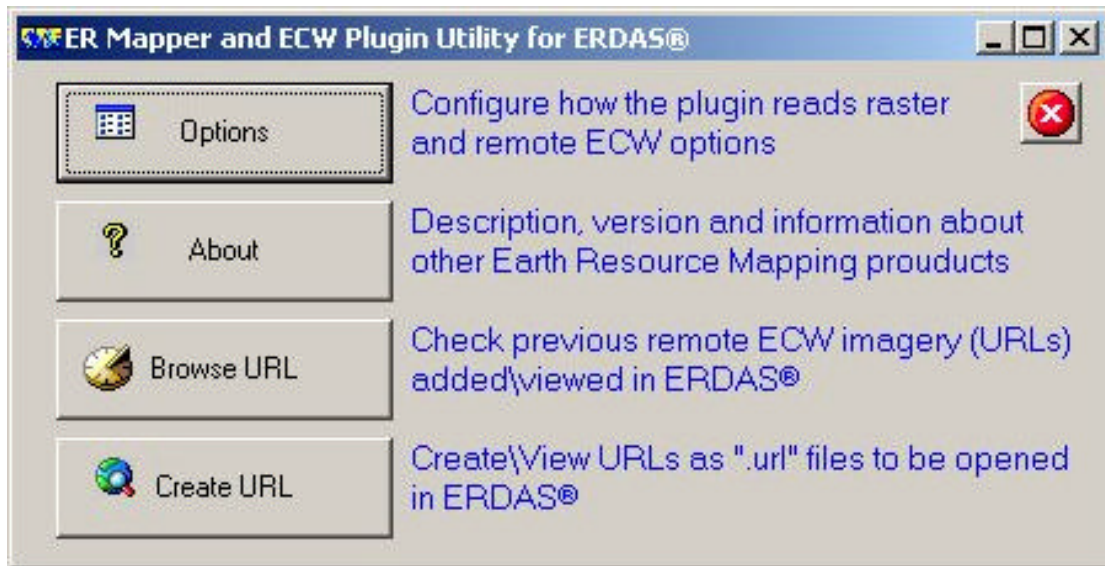
Also, 18 example URL files for remote ECWP support are available in the directory:

C:\Program Files\Earth Resource Mapping\ECW and ER Mapper Erdas URLs

Q. How do I load a new URL into ERDAS Imagine®8.5 from an Image Web Server?

A. To load a new URL into ERDAS Imagine®8.5 the user must first create a "url" file which can be viewed in ERDAS Imagine®8.5 using a URL Utility.

The executable name for this utility is "ErdasErmSettings.exe" and it can be found in the ERDAS Imagine®8.5 executable directory. *\\IMAGINE 8.5\Bin\WTx86*



Before using the utility to adjust settings, ensure that no ECW or ER Mapper images are loaded in ERDAS Imagine®8.5. The utility can be used while ERDAS Imagine®8.5 is running but not while an ECW or ER Mapper images remains open.

The utility can also preview remote ECW images. This option is only available if the NCSView ActiveX control is present on the user's machine. To obtain this plug-in, please view the ECW imagery or download the installation, go to www.earthetc.com using Internet Explorer.